

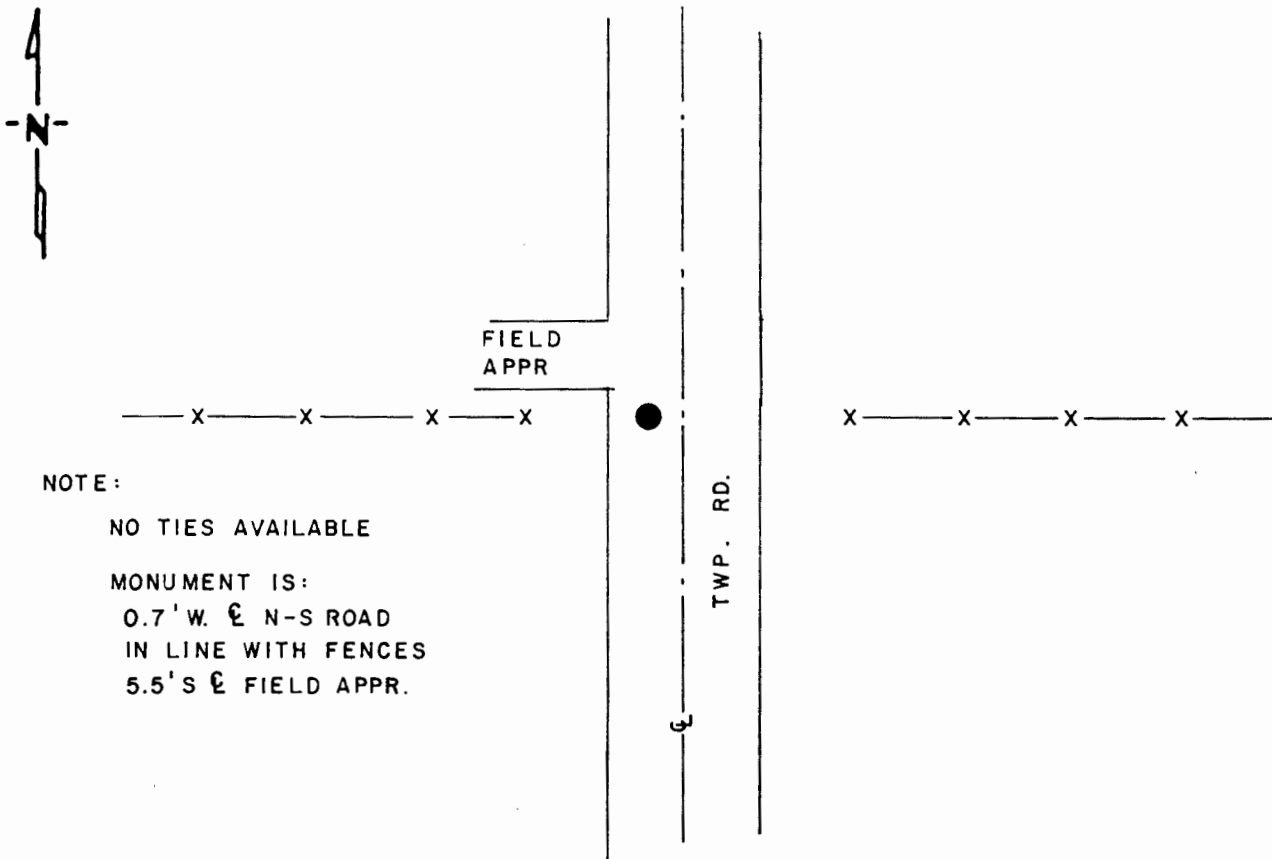
CERTIFICATE OF LOCATION OF GOVERNMENT CORNER

EAST QUARTER Corner of Section 34, Township 108 N, Range 40 W, 5th P.M.
 STATE OF MINNESOTA, County of MURRAY

At the corner location shown on the sketch

- On 10-11-89 found a 6" x 6" x 18" GRANITE STONE, DOWN 0.7'
DATE
- left monument as found,
 lowered monument,
 removed monument (explain)
- On 10-11-89 placed a 1 1/4" x 1 1/4" x 20" PERFORATED STEEL TUBE WITH
DATE
ALUMINUM CAP STAMPED "DNR SURVEY MARKER" DOWN 0.4'

SKETCH OF REFERENCE TIES



NOTE:

NO TIES AVAILABLE
 MONUMENT IS:
 0.7' W. & N-S ROAD
 IN LINE WITH FENCES
 5.5' S & FIELD APPR.

Statement of evidence relative to this corner location is on back of page

LRP 12-29-89
 WMA 1474

I hereby certify that this document and the data contained herein was prepared by me or under my direct supervision.

Lowell R. Pommeroy Jr. 12-29-89
SIGNATURE DATE

Registration No. 17005

- Land Surveyor, Professional Engineer
- County Surveyor County Engineer

OFFICE OF THE COUNTY RECORDER

County of MURRAY

I hereby certify that this document was filed in the Co. Recorders office at _____ M. on the _____ day of _____ A.D., 19 _____

County Recorder J. Anne V. Johnson

By JAN 3 1990, Deputy

DOCUMENT NO. _____

East Quarter Corner Section 34, Township 108 North, Range 40 West

The DNR Bureau of Engineering contacted the following offices for information on this corner:

MN Secretary of State
Murray County Recorder and Highway Engineer
Bell Surveying at Worthington
RCM at Gaylord
Lyle Moseng at Marshall
Madsen Land Surveying at Fairmont

1861 The U.S. General Land Office field notes in the Secretary of State's Office show this corner is marked with a wood post set in mound of earth with pits and trench dug around the mound.

1932 Surveyor's Record Book A, on page 374, obtained from the County Recorder's Office, shows a survey by J. W. Woostencroft. This corner is described as a stone in grade. Corner is shown to measure:
2634 ft. from the northeast corner Section 34
2634 ft. from the southeast corner Section 34

No Date Surveyor's Record Book, obtained from the County Highway Engineer's Office, contains a survey of Section 34 by J. W. Woolstencroft. Survey states "found the center of Section 34 and divided the north half of the section into two equal halves, north half and south half. Stakes set on corners and on lines."

1989 October, the DNR Bureau of Engineering conducted a search for the corner and found a 6" by 6" by 18" granite stone down 0.7 ft.. Stone is 0.7 ft. west of center line north-south road, in line with fences east and west. On October 11, the DNR Bureau of Engineering hired a backhoe operated by Mylan Larson to dig for further evidence of this corner. Dug a 3½ ft. east-west by 7 ft. north-south hole. Encountered natural ground down 1 ft., continued down to 4 ft. but found nothing else. Marked the stone with "DNR found October 11, 1989" and reset it down 2.3 ft., with a 3/4" by 24" iron rod on its north side. Placed a DNR Survey Marker over the stone down 0.4 ft.. Stone was found to measure:
2632.08 ft. from an approximate northeast corner Section 34
2633.65 ft. from an approximate southeast corner Section 34

Analysis of the above information led the DNR Bureau of Engineering to conclude that the found stone marks the location of the corner.